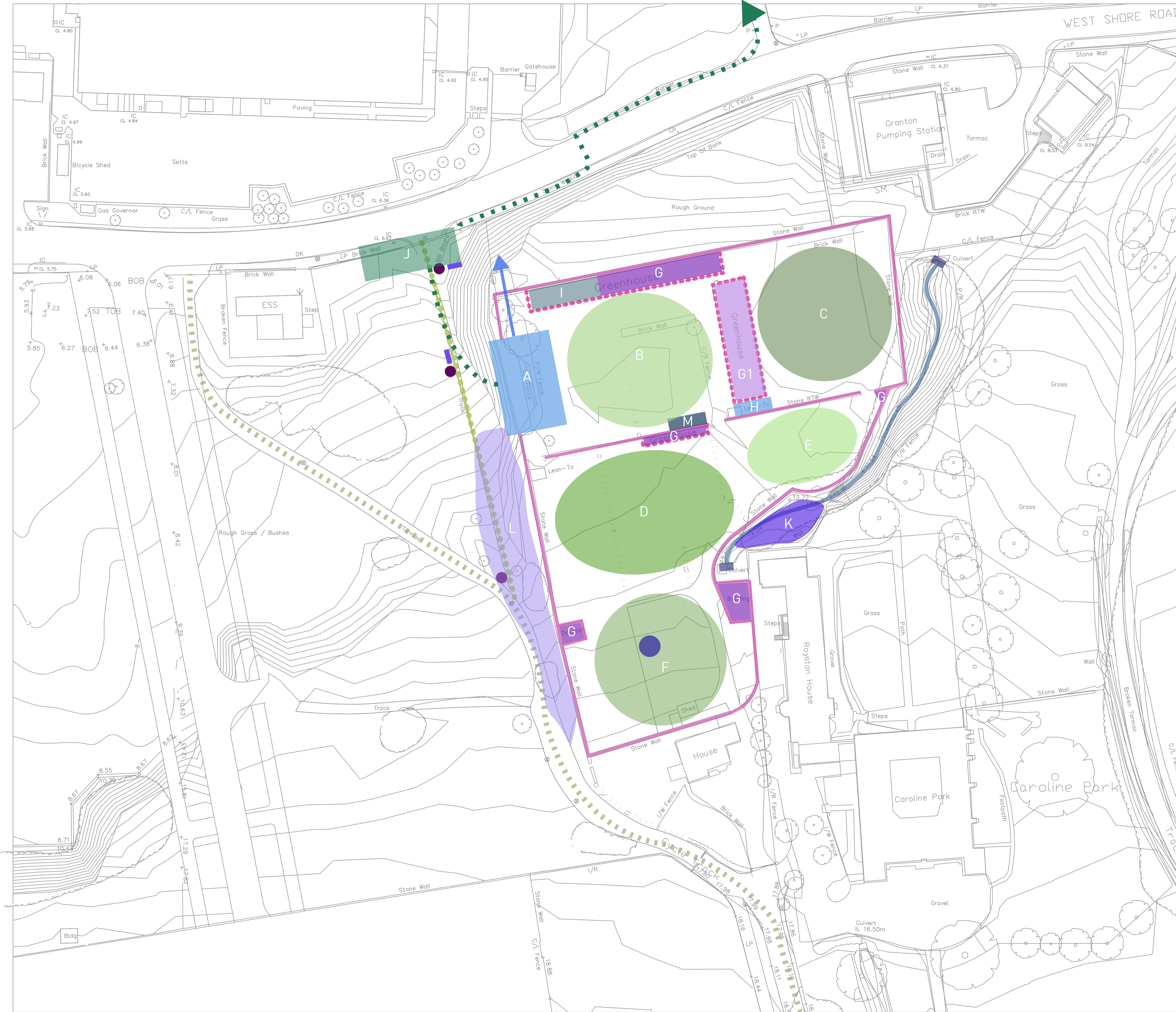


GRANTON CASTLE WALLED GARDEN PROPOSALS BY FoGCWG FOR
CONSIDERATION IN THE NEW GRANTON WATERFRONT MASTERPLAN (WORK IN PROGRESS) SEPTEMBER 2016



PROPOSED FEATURES KEY:

- A PROPOSED GARDEN HUB BUILDING
- B KITCHEN GARDEN
- C HERITAGE ORCHARD RESTORATION
- D WORKSHOP/DEMONSTRATION AREA
- E SANCTUARY GARDENS
- F MEDICINAL/PIGMENT GARDEN
- G RESTORED GLASS HOUSE/BUILDING
- G1 REPLACEMENT POLYTUNNEL
- H OUT HOUSE/BARN
- I OPEN CAFE DINING PART OF GLASS HOUSE
- J LOADING BAY, SPACE FOR MINI BUS PLUS 3 DISABLED PARKING SPACES
- K POND AREA
- L SELECTIVE TREE REMOVAL
- M COMPOSTING AREA
- CYCLE RACKS
- HISTORICAL INTERPRETATION & SIGNAGE
- BORE HOLE FOR GARDEN WATER SUPPLY
- - - NEW PEDESTRIAN WALKWAY WITH PEDESTRIAN CROSSING, CONNECTING WATERFRONT WITH GARDEN ENTRANCE
- / VIEW OF WATERFRONT INCORPORATED INTO GARDEN HUB BUILDING DESIGN

NOTES:

EXISTING CYCLE PATH TO BE ENHANCED INCORPORATING GROUND SET LED LIGHTS

SCALE - 1:500@A1

